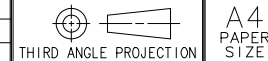


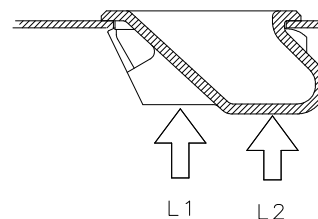
REV	DATE	DRAWN/CHKD	DESCRIPTION					
A	09APR2002	GDM	UPDATE FORMAT					



**SOUTHCO PERFORMANCE GUIDELINES**

THE PERFORMANCE GUIDELINES SHOWN ON THIS PAGE ARE SUPPLIED AS A GENERAL GUIDE ONLY, AS CONDITIONS VARY WITH EACH APPLICATION AND METHOD OF INSTALLATION. STRENGTH DATA GIVEN IS FOR FAILURE OF THE PRODUCT OR FOR SUFFICIENT DEFORMATION TO MAKE PRODUCT INOPERABLE. NO SAFETY FACTOR HAS BEEN APPLIED IT IS RECOMMENDED THAT THE USER REQUEST A PRODUCT SAMPLE FOR TESTING TO DETERMINE THE SUITABILITY OF THE PRODUCT FOR THE PURPOSE INTENDED AND USER'S PARTICULAR APPLICATION.

PART NUMBER	PANEL THICKNESS (mm/in)	PUSH-OUT FORCES (N/ibf)	
		L1	L2
P2-41-1	1.19/.047	750/170	800/180
P2-42-1	1.42/.056	890/200	820/185
P2-43-1	1.93/.076	890/200	930/210
P2-44-1	2.39/.094	800/180	1020/230
P2-51-1	1.19/.047	890/200	800/180
P2-52-1	1.42/.056	1220/275	820/185
P2-53-1	1.93/.076	1340/300	930/210
P2-54-1	2.39/.094	1600/360	1020/230



PUSH-OUT FORCES

- ① L1 IS A FORCE APPLIED TO BOTH RETAINING LEGS AS SHOWN ABOVE. THE VALUES SHOWN REPRESENT ULTIMATE FORCES.
- ② L2 IS A FORCE APPLIED AT CENTER OF CUP AS SHOWN ABOVE. THE VALUES SHOWN REPRESENT ULTIMATE FORCES.
- ③ ALL PULLS WERE TESTED IN COLD ROLLED STEEL PANELS.