


southco®

PROPRIETARY ITEM - EXCEPT FOR USES EXPRESSLY GRANTED IN WRITING INFORMATION DISCLOSED HEREON IS CONFIDENTIAL AND ALL RIGHTS PATENT AND OTHERWISE ARE RESERVED BY SOUTHCO, INC.

V7 DRAW LATCH, SMALL SIZE

DATE	DRAWN	CHKD	SCALE	DRAWING NUMBER
30MAY2005	RC	XXX	1:1	TD-V7-2-J

REV	DATE	DRAWN/CHKD	DESCRIPTION						
A	06JUL2005	RC	RELEASED FOR LAUNCH						



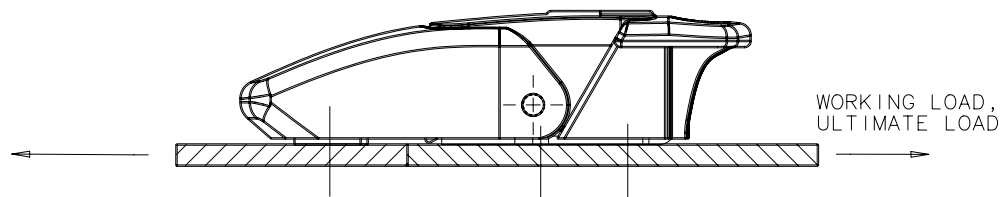
THIRD ANGLE PROJECTION

A4 PAPER SIZE

SOUTHCO PERFORMANCE GUIDELINES

THE PERFORMANCE GUIDELINE SHOWN ON THIS PAGE ARE SUPPLIED AS A GENAL GUIDE ONLY. AS CONDITIONS VARY WITH EACH APPLICATION AND METHOD OF INSTALLATION. STRENGTH DATA GIVEN IS FOR FAILURE OF THE PRODUCT OR FOR SUFFICIENT DEFORMATION TO MAKE PRODUCT INOPERABLE. NO SAFTY FACTOR HAS BEEN APPLIED. IT IS RECOMMENDED THAT USER REQUEST A PRODUCT SAMPLE FOR TESTING TO DETERMINE THE SUITABILITY OF THE PRODUCT FOR THE PURPOSE INTENDED AND USER'S PARTICULAR APPLICATION.

X=0, OR 1
Y=1, OR 5
Z=1, 2, OR 5



PART NUMBER	MAXIMUM RECOMENDED WORKING LOAD ①	AVERAGE ULTIMATE LOAD ②
V7-10-1XY-Z0	1200N (270LBS) Ⓐ	2070N (465LBS)

Ⓐ : KEEPER SCREW BROKEN.

① : WORKING LOAD IS THE MAXIMUM FORCE THAT THE PRODUCT WILL WITHSTAND WITHOUT AFFECTING THE OPERATION OR APPEARANCE OF THE PRODUCT.

② : AVERAGE ULTIMATE LOAD CAUSES FAILURE OF THE PRODUCT OR SUFFICIENT DEFORMATION TO MAKE THE PRODUCT INOPERABLE.